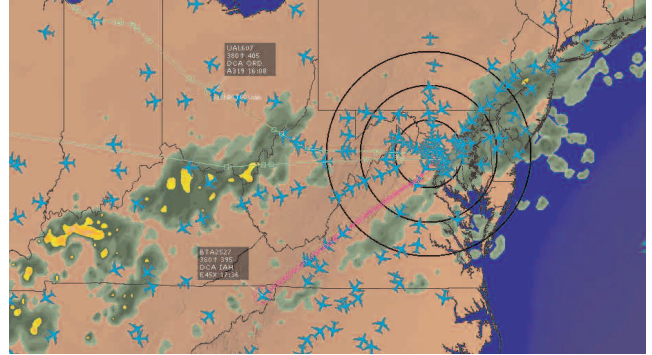


FE FUSION™ SYSTEM OVERVIEW

- Allows Flight Explorer Professional to serve as the single display platform or "Portal" for flight following, route planning, and weather.
- Enables clients to easily integrate and view custom raster and/or vector based dynamic data within the Flight Explorer Professional ASD.
- Provides customers complete flexibility as to what types of dynamic data a client can incorporate into Flight Explorer. For example, dynamic weather can be vendor provided or client specific.
- Actively monitors all product overlays through a Web-based dashboard interface to ensure 99.99% system reliability and performance.

FE Fusion™ Dynamic Data Integration System (DDIS)

The FE Fusion™ DDIS (dynamic data integration system) is a powerful solution that provides air carriers the ability to integrate and display all current and future weather, flight planning and other on-site dynamic data within the Flight Explorer Professional™ ASD. The key components of the client-side FE Fusion™ system include the use of an Onsite Product Processor (OPP) and an Onsite Product Interface (OPI).



FE Fusion™ allows air carriers to display all company flights, routes and weather on a single display platform.

How FE Fusion™ Works

- The OPP provides air carriers a tool to translate existing dynamic raster and vector based weather and other overlay product formats into the OPI format. The OPI then reads the data files generated by the OPP, and displays them accurately on the Flight Explorer ASD.
- FE Fusion™ data files are not limited to weather data. They can also include data files from other Onsite operational systems as required by an air carrier.
- FE Fusion™ also includes a Hot-Hot server configuration, automatic file collection and distribution and a Web-based dashboard for system administration, monitoring and alerting.

